

February 5, 2009

Subject: Insuladd® Paint Additives

Dear Sirs,

Since 2005 VIE Inc. (trade name **FuelEnergySavers.com**) has studied the effects of ceramic paint additives, including Insuladd®. In the summer of 2008 we performed a preliminary study of Insuladd® exploring the physical properties and examining various possibilities for creating spin-off products as part of our energy-technology R&D activities.

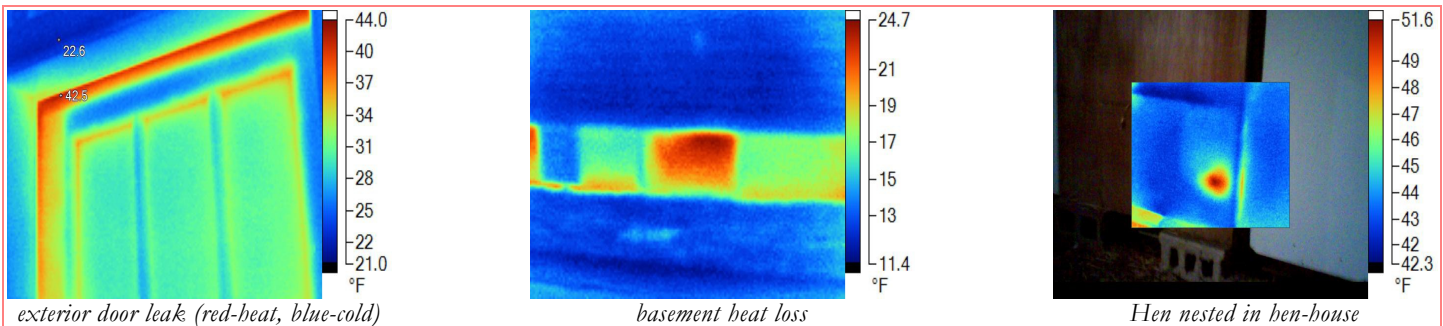
To date **ALL** our findings show that applying Insuladd® paint additive mixed in latex paint to the interior of buildings result in more energy-efficient heating than with a painted surface alone.

From the summer of 2008 to present we have continued various studies. One device we use is a thermal imager with sufficient sensitivity to pinpoint energy-loss in building structures. The imager effectively compares an Insuladd® treated surface with a painted-only surface side-by-side for qualitative illustration of the effect¹:



Heated foam box side-by-side comparison of Insuladd® (inside left /blue-cooler) to paint-only (inside right/red-green)

We have also conducted in-building studies of Insuladd® for recommended applications. Our thermal imager can identify energy loss in building-structures. In a building, the thermal imager will output images showing energy-loss that will look like the illustrations below:



Real-world thermal images showing energy-loss from the outside

¹ This thermal image of the box (Infrared image) of the two separate rectangular paint samples are blurred primarily because of the edge effect, where heat from the inside of the box, once it passes through the painted layers, spreads out throughout the foam in varying paths on its way to the cooler air in the lab.

One such building was a local church in our home town. We conducted a thermal survey before and after the application of Insuladd to the main chapel area. After accounting for the fuel consumption for December 2007 & 2008, and incorporating the average temperatures for those months we estimated a decrease in fuel use by ~20%.

About us:

We are owned and operated by a father-and-son team of physics engineers who recently completed careers at NASA, Mark and Dr. Donald Hei. Additionally, we are supported by a team of Physicists, Engineers, and other Support personnel who are available as needed:

Mark Hei:

- ✓ Systems-Analyst & Physics-Engineer, 19 years (Engineering Physics, B.S.)
- ✓ 18+ years as a NASA Contractor (1990-2008)
- ✓ 12 years with **VIE, Inc/FuelEnergySavers.com** (1997-Present)

Experience includes but not limited to the following items:

- ✓ Wide variety of skills – those specific to the energy-efficiency fields include electrical, mechanical & computer engineering, systems integration, applied physics methods, control systems & computer-controlled automation, thermodynamics, equipment fabrication & calibration, etc.
- ✓ An Infraspection Level I & II Certified thermographer, meeting training requirements of NDT personnel in the Thermal/Infrared Method ASNT document, SNT-TC-1A

Dr. Donald J. Hei:

- ✓ Physicist, 40 years in Engineering Physics – (achieved Ph.D in Space Laboratory Plasma Physics)
- ✓ 28 years at NASA / Sr. Technical Expert to Technical GS-15 (1969-1997)
- ✓ 12 years with **VIE, Inc/FuelEnergySavers.com** (1997-Present)

Experience includes but not limited to the following items:

- ✓ Participated in Space Exploration Initiative (SEI) Study to consider returning to the Moon and establishing a presence on Mars
- ✓ Sr. technical expert and/or project manager for a wide variety of projects at all levels within NASA
- ✓ Conducted numerous training seminars, lectures, and R&D activities

Sincerely,



Mark Hei

President of FuelEnergySavers.com/VIE, Inc.